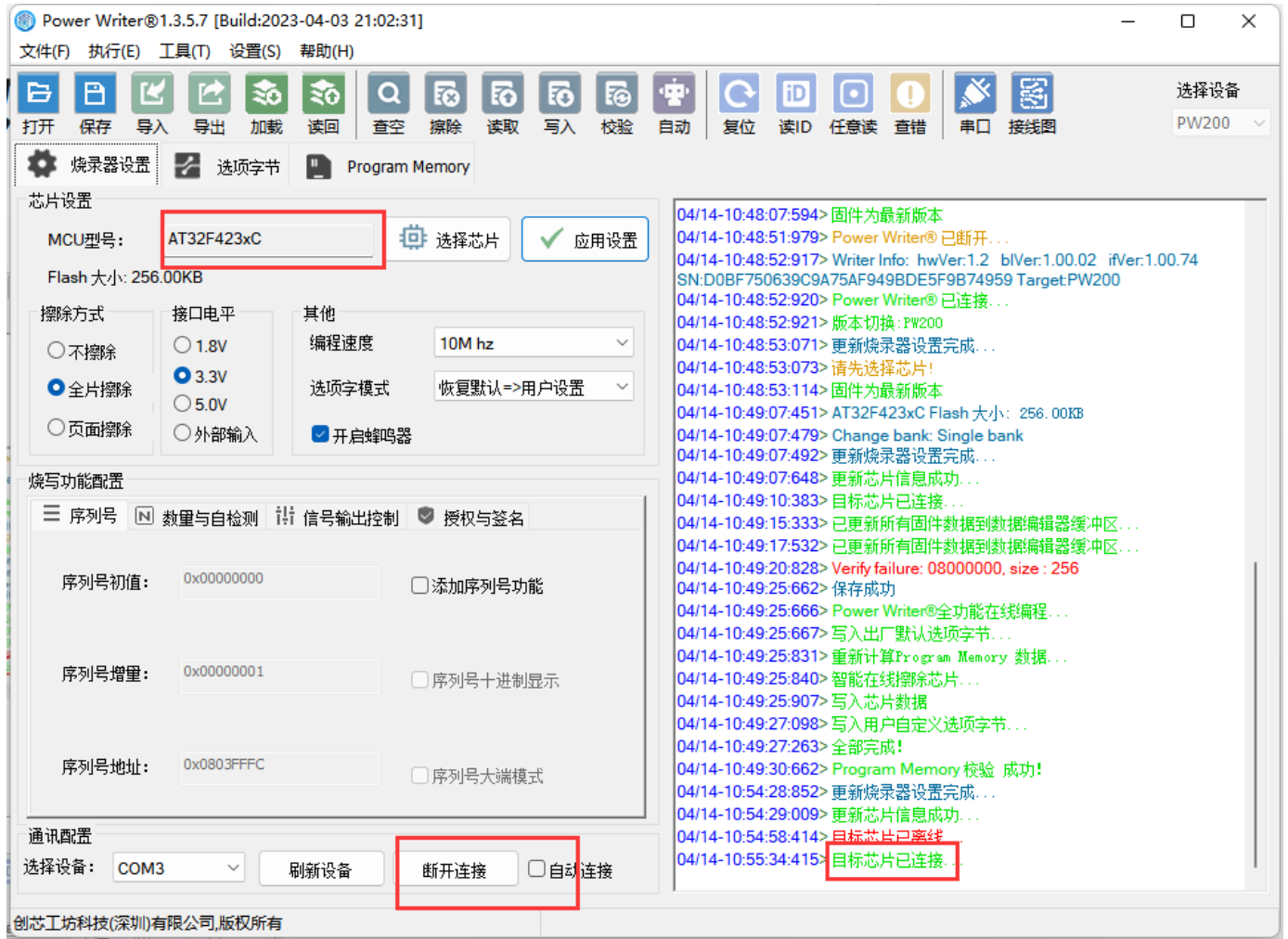


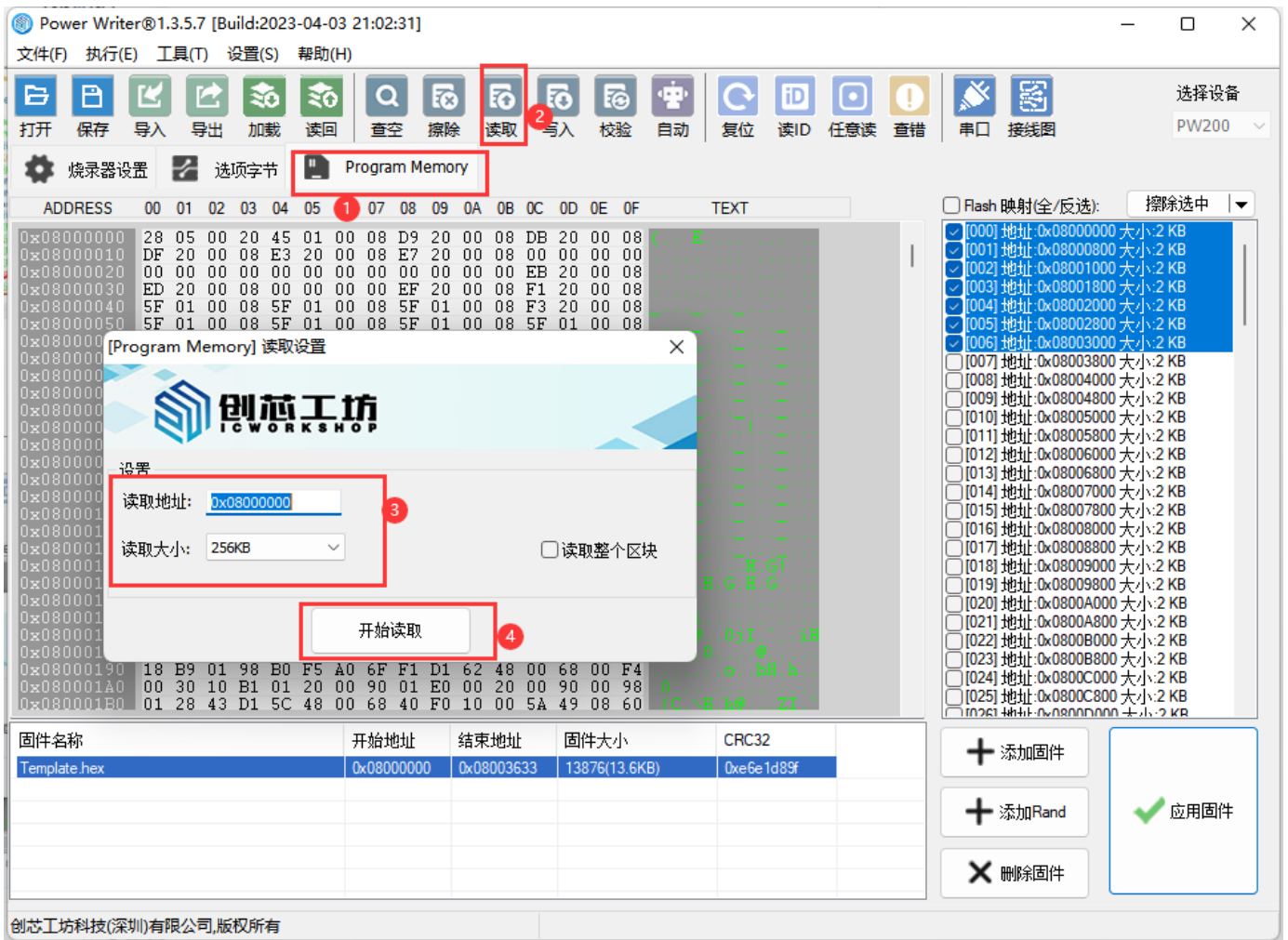


3.2.10: 芯片数据如何读取保存?

连接烧录器和目标芯片



读取芯片数据



把读回的数据存储到电脑磁盘



随机截取读回的数据保存，在要截取的数据两端右键设置起始地址和结束地址，然后导出数据

```
0x08003490 73 64 61 79 00 00 00 00 4D 6F 6E 6B 65 79 00 00 sday... Monkey
0x080034A0 BB A2 00 00 C5 A3 00 00 BC A6 00 00 B9 B7 00 00
0x080034B0 D2 BB 00 00 CD C3 00 00 CB C4 00 00 C8 D5 00 00
0x080034C0 C9 DF 00 00 CE E5 00 00 C2 ED 00 00 D6 ED 00 00
0x080034D0 BA EF 00 00 D1 F2 00 00 CA F3 00 00 C1 F9 00 00
0x080034E0 C1 FA 00 00 C8 FD 00 00 B6 FE 00 00 0C 35 00 08
0x080034F0 00 00 00 20 28 01 00 00 8C 30 00 08 34 36 00 08
0x08003500 28 01 00 20 00 04 00 00 9C 30 00 08 00 A2 4A 04
0x08003510 00 00 00 00 00 00 00 00 01 02 03 04 06 07 08 09
0x08003520 00 00 00 00 01 02 03 04 01 02 03 04 06 07 08 09
0x08003530 02 04 06 08 00 00 00 00 00 00 00 00 00 00 00 00
0x08003540 01 00 00 00 01 00 00 00 D0 07 00 00 00 00 00 00
0x08003550 1F 00 00 00 1C 00 00 00 1F 00 00 00 1E 00 00 00
0x08003560 1F 00 00 00 1E 00 00 00 1F 00 00 00 1F 00 00 00
0x08003570 1E 00 00 00 1F 00 00 00 1E 00 00 00 1F 00 00 00
0x08003580 00 00 00 00 BC 34 00 08 00 34
0x08003590 E4 34 00 08 B8 34 00 08 C4 34
0x080035A0 CC 34 00 08 D8 34 00 08 A4 34
0x080035B0 B4 34 00 08 E0 34 00 08 C0 34
0x080035C0 D4 34 00 08 D0 34 00 08 A8 34
0x080035D0 64 34 00 08 5C 34 00 08 84 34
0x080035E0 8C 34 00 08 54 34 00 08 6C 34
0x080035F0 3C 34 00 08 50 34 00 08 2C 34
0x08003600 24 34 00 08 0C 34 00 08 14 34
0x08003610 98 34 00 08 34 34 00 08 20 34
0x08003620 00 00 00 00 00 00 00 00 00 00
0x08003630 00 00 00 00 FF FF FF FF FF FF
0x08003640 FF FF FF FF FF FF FF FF FF FF FF FF FF FF FF
```

复制
粘贴
跳转到地址
设置为选区起始地址 1
设置为选区结束地址 2
导出选区数据 3

操作示范

读取整个区域

Power Writer@1.3.5.8 [Build:2023-04-15 04:56:06]

文件(F) 执行(E) 工具(T) 设置(S) 帮助(H)

打开 保存 导入 导出 查空 擦除 读取 写入 校验 自动 复位 读ID 任意读 串口 接线图

烧录器设置 选项字节 Program Memory

芯片设置

MCU型号: AT32F423xC 应用设置

Flash 大小: 256.00KB

擦除方式: 不擦除 全片擦除 页面擦除

接口电平: 1.8V 3.3V 5.0V

其他: 编程速度: 10M hz 选项字模式: 恢复默认=>用户设置 开启蜂鸣器

烧写功能配置

☰ 序列号 数量与自检测 信号输出控制 授权与签名

序列号初值: 0x00000000 添加序列号功能

序列号增量: 0x00000001 序列号十进制显示



序列号地址: 0x0803FFFC 序列号大端模式

通讯配置

选择设备: COM6 自动连接

创芯工坊
ICWORKSHOP

创芯工坊科技(深圳)有限公司
网址: <https://www.icworkshop.com>
电话: 400-1568-598
邮箱: cs@icworkshop.com

04/18-09-23:03:269> 检测到驱动已经安装...
04/18-09-23:04:232> Power Writer@版本切换: FWLINK 为 FWLINK2
04/18-09-23:04:232> Writer Info: hwVer:1.1 blVer:1.00.02 ifVer:1.00.74 SN:DC09A59C903579A4B829A7F037333601 Target:FWLINK2
04/18-09-23:04:235> Power Writer@ 已连接...
04/18-09-23:04:236> 版本切换:FWLINK2
04/18-09-23:04:532> 更新烧录器设置完成...
04/18-09-23:04:534> 请先选择芯片!
04/18-09-23:04:565> 固件为最新版本
04/18-09-23:16:795> AT32F423xC Flash 大小: 256.00KB
04/18-09-23:16:822> Change bank: Single bank
04/18-09-23:16:833> 更新烧录器设置完成...
04/18-09-23:16:995> 更新芯片信息成功...
04/18-09-23:19:221> 目标芯片已连接...

创芯工坊科技(深圳)有限公司,版权所有

读取特定区域



选择设备

PWLINK2

烧录器设置 选项字节 Program Memory

ADDRESS	00	01	02	03	04	05	06	07	08	09	0A	0B	0C	0D	0E	0F	TEXT
0x08000000	FF	FF	00	20	45	01	00	00	00	00	00	00	00	00	00	00	(... E...
0x08000010	FF	FF	00	00	00	00	00	00	00	00	00	00	00	00	00	00	
0x08000020	00	00	00	00	00	00	00	00	00	00	00	00	00	00	00	00	
0x08000030	FF	FF	00	00	00	00	00	00	00	00	00	00	00	00	00	00	
0x08000040	FF	FF	00	00	00	00	00	00	00	00	00	00	00	00	00	00	
0x08000050	FF	FF	00	00	00	00	00	00	00	00	00	00	00	00	00	00	
0x08000060	FF	FF	00	00	00	00	00	00	00	00	00	00	00	00	00	00	
0x08000070	FF	FF	00	00	00	00	00	00	00	00	00	00	00	00	00	00	
0x08000080	FF	FF	00	00	00	00	00	00	00	00	00	00	00	00	00	00	
0x08000090	FF	FF	00	00	00	00	00	00	00	00	00	00	00	00	00	00	
0x080000A0	FF	FF	00	00	00	00	00	00	00	00	00	00	00	00	00	00	
0x080000B0	FF	FF	00	00	00	00	00	00	00	00	00	00	00	00	00	00	
0x080000C0	FF	FF	00	00	00	00	00	00	00	00	00	00	00	00	00	00	
0x080000D0	FF	FF	00	00	00	00	00	00	00	00	00	00	00	00	00	00	
0x080000E0	FF	FF	00	00	00	00	00	00	00	00	00	00	00	00	00	00	
0x080000F0	FF	FF	00	00	00	00	00	00	00	00	00	00	00	00	00	00	
0x08000100	FF	FF	00	00	00	00	00	00	00	00	00	00	00	00	00	00	
0x08000110	FF	FF	00	00	00	00	00	00	00	00	00	00	00	00	00	00	
0x08000120	FF	FF	00	00	00	00	00	00	00	00	00	00	00	00	00	00	
0x08000130	FF	FF	00	00	00	00	00	00	00	00	00	00	00	00	00	00	
0x08000140	FF	FF	00	00	00	00	00	00	00	00	00	00	00	00	00	00	(... H.G.H.G...
0x08000150	FF	FF	00	00	00	00	00	00	00	00	00	00	00	00	00	00	
0x08000160	47	02	00	00	31	01	00	00	00	00	00	00	00	00	00	00	G...1
0x08000170	00	49	00	00	40	04	00	00	00	00	00	00	00	00	00	00	lH.k@.0jI...iH
0x08000180	00	00	00	00	00	00	00	00	00	00	00	00	00	00	00	00	.h...0...@
0x08000190	18	09	01	00	00	05	40	68	01	01	62	48	00	68	00	54	.h...o...bH.h
0x080001A0	00	00	00	00	00	00	00	00	00	00	00	00	00	00	00	00	.0
0x080001B0	00	00	00	00	00	00	00	00	00	00	00	00	00	00	00	00	(C.\H.k@...ZI

Flash 映射(全/反选): 擦除选中

- [000] 地址:0x08000000 大小:2 KB
- [001] 地址:0x08000800 大小:2 KB
- [002] 地址:0x08001000 大小:2 KB
- [003] 地址:0x08001800 大小:2 KB
- [004] 地址:0x08002000 大小:2 KB
- [005] 地址:0x08002800 大小:2 KB
- [006] 地址:0x08003000 大小:2 KB
- [007] 地址:0x08003800 大小:2 KB
- [008] 地址:0x08004000 大小:2 KB
- [009] 地址:0x08004800 大小:2 KB
- [010] 地址:0x08005000 大小:2 KB
- [011] 地址:0x08005800 大小:2 KB
- [012] 地址:0x08006000 大小:2 KB
- [013] 地址:0x08006800 大小:2 KB
- [014] 地址:0x08007000 大小:2 KB
- [015] 地址:0x08007800 大小:2 KB
- [016] 地址:0x08008000 大小:2 KB
- [017] 地址:0x08008800 大小:2 KB
- [018] 地址:0x08009000 大小:2 KB
- [019] 地址:0x08009800 大小:2 KB
- [020] 地址:0x0800A000 大小:2 KB
- [021] 地址:0x0800A800 大小:2 KB
- [022] 地址:0x0800B000 大小:2 KB
- [023] 地址:0x0800B800 大小:2 KB
- [024] 地址:0x0800C000 大小:2 KB
- [025] 地址:0x0800C800 大小:2 KB
- [026] 地址:0x0800D000 大小:2 KB

固件名称	开始地址	结束地址	固件大小	CRC32

+ 添加固件

+ 添加Rand 应用固件

X 删除固件



提示

[下载本页PDF文件](#)

标签:

FAQ

Export

编辑本页